

We can't wait to welcome you!

Please stop by one of our Welcome Centers to make the most of your visit! Each center offers walk-in services and acts as a hub for community and campus information.

Greater Madison Convention & Visitors Bureau

22 East Mifflin Street, Suite 200, Madison
608.255.2537 • visitmadison.com • Monday-Friday: 8 a.m.-5 p.m.

Dane County Regional Airport Information Desk

4000 International Lane, Madison (located in baggage claim area)
Monday & Tuesday: Noon-11 p.m.; Wednesday-Friday:
Noon-1 p.m.; Saturday: 2-7 p.m.; Sunday: 1:00-11:00 p.m.

Town Center Welcome Desk

UW Visitor & Information Programs Wisconsin Institutes
for Discovery • 330 N. Orchard Street, Madison
Monday-Friday: 7 a.m.-6 p.m.; Saturday: 9 a.m.-3 p.m.

UW-Madison Campus & Visitor Relations

1308 W. Dayton St., Madison • 608.263.2400 • wisc.edu
Daily: 7:30 a.m.-10:00 p.m.
Hours may vary during holiday and university breaks

RELOCATION PARTNER CHECKLIST

✓ FIND A JOB

the qt group • qtgroup.com
danejobs.com
jobsmadison.com
cityofmadison.com/HR
jobcenter@wisconsin.com

✓ HOME SWEET HOME

PURCHASE
Bunbury & Associates Realtors • bunburyrealtors.com
Central Place Real Estate, Inc. • centralplacere.com
First Weber Group Realtors • firstweber.com
Mullins Group • mullinsgroup.com
Raymond Management Company, Inc. • raymondteam.com
RE/MAX Preferred • bestagentfirst.com
Restaino & Associates Realtors • madisonrelocation.com
Stark Company Realtors • starkhomes.com/relocation.php

RENT

ABODO • abodo.com/madison-wi
JSM Properties, LLC • jsmproperties.com
Longfellow Lofts • longfellowlofts.com
MadisonApartmentLiving.com
Steve Brown Apartments • stevebrownapts.com
Tenant Resource Center • tenantresourcecenter.org

✓ GET CONNECTED

Alliant Energy • alliantenergy.com
Madison Gas & Electric • mge.com
Madison Water Utility • cityofmadison.com/water

✓ GREAT SCHOOLS

Edgewood College • edgewood.edu
Madison College • madisoncollege.edu
Madison Metropolitan School District • madison.k12.wi.us
University of Wisconsin-Madison • wisc.edu

✓ THE DOC IS IN

SSM Health/Dean Medical Group • smhhealth.com/medicalgroup
SSM Health/St. Mary's Hospital-Madison • stmarysmadison.com
Unity Point Health-Meriter • unitypoint.org/madison
UW Health & Unity Health Insurance • uwhealth.org

✓ FINANCE & INSURANCE GURUS

American Family Insurance • amfam.com
BMO Harris Bank • bmo-harris.com
CUNA Mutual Group • cunamutual.com

WELCOME HOME!

First Business Bank • firstbusiness.com
Home Savings Bank • home-savings.com
Johnson Bank • johnsonbank.com
Oak Bank • oakbankonline.com
SVA Certified Public Accountants • sva.com
U.S. Bank Madison • usbank.com

✓ IN AN EMERGENCY

Madison Fire Department • cityofmadison.com/fire
Madison Police Department • cityofmadison.com/police

OTHER RELOCATION RESOURCES

NEED A LIFT?

Alfred, LLC • ridealfred.com
Avis and Budget Car Rentals • rental.aviswi.com
Badger Bus • badgerbus.com
Dane County Regional Airport • msnairport.com
Enterprise Rent-A-Car • enterprise.com
Gallant Knight Limousine • gallantknightusa.com
Lamers Bus Lines, Inc. • golamers.com
Madison Metro • mymetrobus.com
Presidential Limousine • presidentiallimo.com
UBER • uber.com/cities/madison
Union Cab Cooperative • unioncab.coop
Van Galder, a Coach USA Company • vangalderbus.com
Wisconsin Aviation • wisconsinaviation.com
Wisconsin Department of Transportation • wisconsin.dot.gov

EXTENDED STAY HOTELS FOR JUST A VISIT

EAST

Comfort Inn & Suites - Airport • comfortmadisoneast.com
GrandStay Residential Suites • grandstaymadison.com
Residence Inn By Marriott-Madison East • marriott.com/MSNRI
Staybridge Suites - Madison East • staybridge.com/sbmadisonwi

SOUTH

Americas Best Value Inn • abvimmadison.net
Clarion Suites at the Alliant Energy Center • clarionmadison.com
Country Inn & Suites - Madison/Monona
countryinns.com/madisonwi_southeast
Magnuson Grand Hotel Madison • madisongrandhotel.com

WEST

Baymont Inn & Suites - West • wiscohoteles.com/wiscobaymont
Best Western West Towne Suites • bwmadison.com
Extended Stay America-Junction Ct. • extendedstayamerica.com
Extended Stay America-Old Sauk Rd. • extendedstayamerica.com
Hampton Inn & Suites - Madison West
madisonwestsuites.hamptoninn.com
Homewood Suites by Hilton - Madison West
madisonwest.homewoodsuites.com
Residence Inn By Marriott-Madison West/Middleton
residenceinnmadisonwest.com
Staybridge Suites - Middleton • staybridge.com/madisonwest

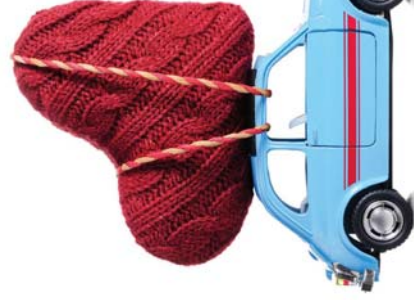
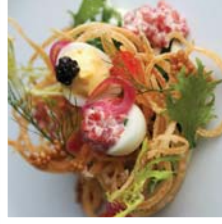
MORE ANSWERS & FRIENDLY FOLKS

Aging & Disability Resource Center • daneadr.org
Churches • churchfinder.com
City of Madison • cityofmadison.com
Dane County • countyofdane.com
Greater Madison Chamber of Commerce
greatermadisonchamber.com
Madison Public Library • madisonpubliclibrary.org
City of Madison Neighborhood Guide
cityofmadison.com/dpcdd/planning/neighborhoods/436
State of Wisconsin • wisconsin.gov
Wisconsin Department of Children & Families,
Licensed child care search • dct.wisconsin.gov/childcare

MADISON

GREATER MADISON CONVENTION & VISITORS BUREAU

RELOCATION GUIDE



FUN FACTS

The City of Madison is named after James Madison, the fourth U.S. President. Many of the city's main downtown streets are named for other men who helped draft and sign the U.S. Constitution.

- World-renowned architect Frank Lloyd Wright spent his adolescent years living in Madison and attended the University of Wisconsin-Madison.

- Georgia O'Keefe was born just outside Madison's city limits in Sun Prairie.

- Henry Vilas Zoo is one of a handful of accredited zoos in the U.S. that are free to the public.

- The Thai Pavilion at Olbrich Botanical Gardens is only one of four located outside of Thailand. The others are in Germany, Norway and Hawaii.

- If you dug a hole in Madison to the other side of the earth, eventually you'd be in the Indian Ocean near the Kerguelen Islands.

- The official bird of Madison, the plastic pink flamingo, originated from a college prank on Bascom Hill in 1979.



How we do Madison.

252,551
Population of Madison

6,000 acres of parkland, and over 200 miles of off-road and multi-use paths and trails. That's **260 PARKS** per 11.6 parks per 100,000 residents!



Home to the largest producer-only farmer's market in the country.



Thousands of Native American **effigy mounds**, the biggest concentration in the U.S., were built along the shores of Madison's lakes. Today, 23 preserved mounds remain on public land in Dane County.

#10 SAFEST
Big City in the U.S.

1 of 5
BEST CITIES ON EARTH FOR BIKING



15,000 acres of lakes, where residents enjoy sailing, canoeing, kayaking, fishing, swimming, and stand-up paddleboarding.

15 OFF LEASH DOG PARKS

40+ LEED BUILDINGS

Including the Dane County Regional Airport and the Monona Terrace® Community and Convention Center

531,273
Population of Dane County

11 GOLF COURSES

AVERAGE TEMPS (F) 57

HOW WE RATE

Madison consistently ranks as a top city to live, work, play and raise a family.

GOING GREEN

- #9 Public Land Park Score
- The Trust for Public Land, May 2017
- The Best Cities on Earth for Biking
- Yahoo Travel, June 2015
- #1 Greenest City in America
- Newsday, April 2014

A FUN PLACE TO BE HEALTHY

- #19 Healthiest Cities in America
- WalleyHub, February 2017
- #1 Best City for an Active Lifestyle
- WalleyHub, January 2017
- #1 Fittest Cities in America
- Fitbit, April 2016

SWEET SPOT FOR SPORTS

- #4 Sportiest City in the U.S.
- Men's Health, September 2017
- #4 Best Value for Craft Beer and Cycling
- Trivago, January 2017
- #5 America's Best College Football Towns
- Travel + Leisure, September 2016

PERFECT PLACE TO LIVE

- One of the Best Cities in America
- Nat Geo Travel, January 2018
- #6 Best City to Celebrate 4th of July
- WalleyHub, July 2017
- #2 Super Cool U.S. Cities
- Expedia, February 2017

BEST IN BUSINESS

- #7 Best Area for STEM Professionals
- WalleyHub, January 2017
- #5 America's Best Cities for Young Professionals
- Forbes, August 2016

PREMIERENAL AT FOOD

- #4 Best Beer Destination in the World
- Vinepair, 2018
- Best Food City in Every State
- Thrillist, March 2017
- Unlikely Foodie Cities
- Fox News, June 2015



A great place to call home.

Welcome to Madison! We're glad you're here or considering making the Madison area your new home. While we can't help unpack boxes, we can help you learn more about our mid-sized city that perfectly blends urban sophistication and charm with natural beauty and small-town ease.

Home to a Big Ten University—University of Wisconsin-Madison—and the state capital, greater Madison is located just off Interstates I-90, I-94 and I-39, providing easy access to Milwaukee (90 minutes), Chicago (3 hours) and Minneapolis (5 hours).

You'll soon discover that with easy access to arts, culture, music, parks and lakes, Madison offers a wide variety of things to do right here at home. An early adopter of farm to table philosophy, Madison's weekly, year-round farmers' market and artisanal meats, cheeses, micro distillers and breweries make our dining scene a favorite among foodies, too. In fact, when it comes to living, working, playing and raising a family, we consistently rank right at the top!

visitmadison.com

GET HELP WITH NAVIGATION AROUND OUR DESTINATION!
FIND A LINK TO THE CITY OF MADISON STREET AND NEIGHBORHOOD MAP AT VISITMADISON.COM/MAPS.